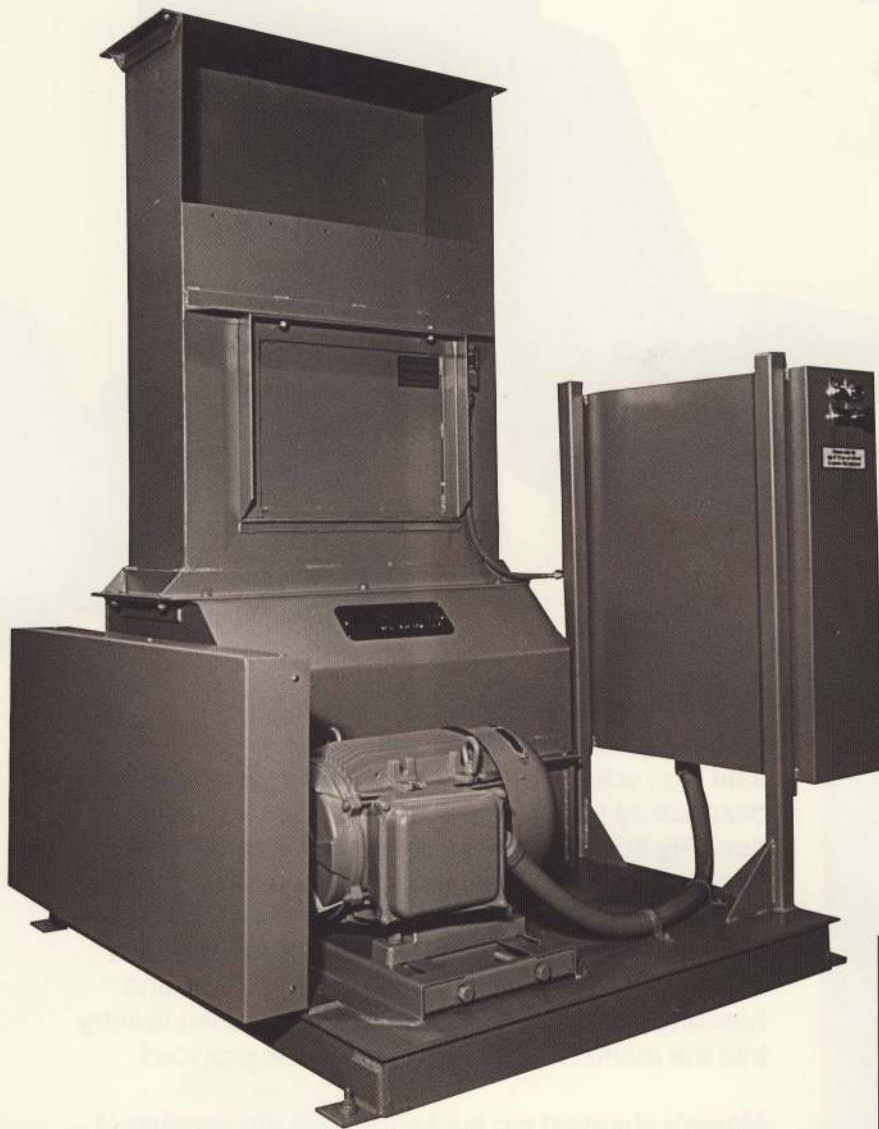


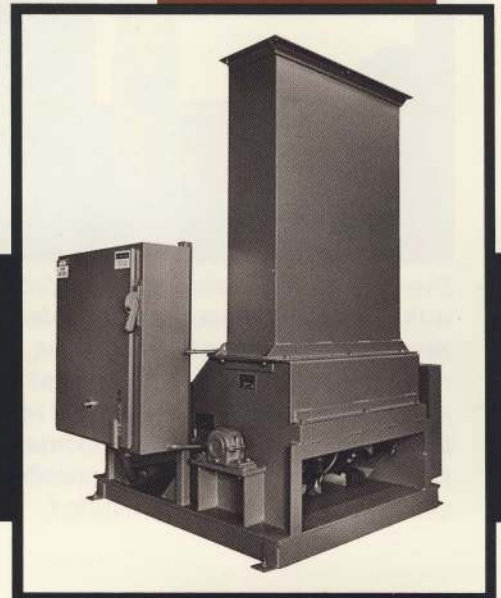
Top Feed Shredders

M
A
R
E
N



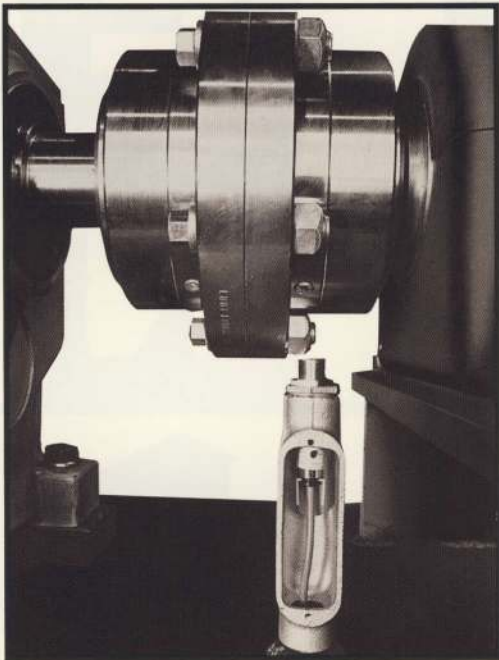
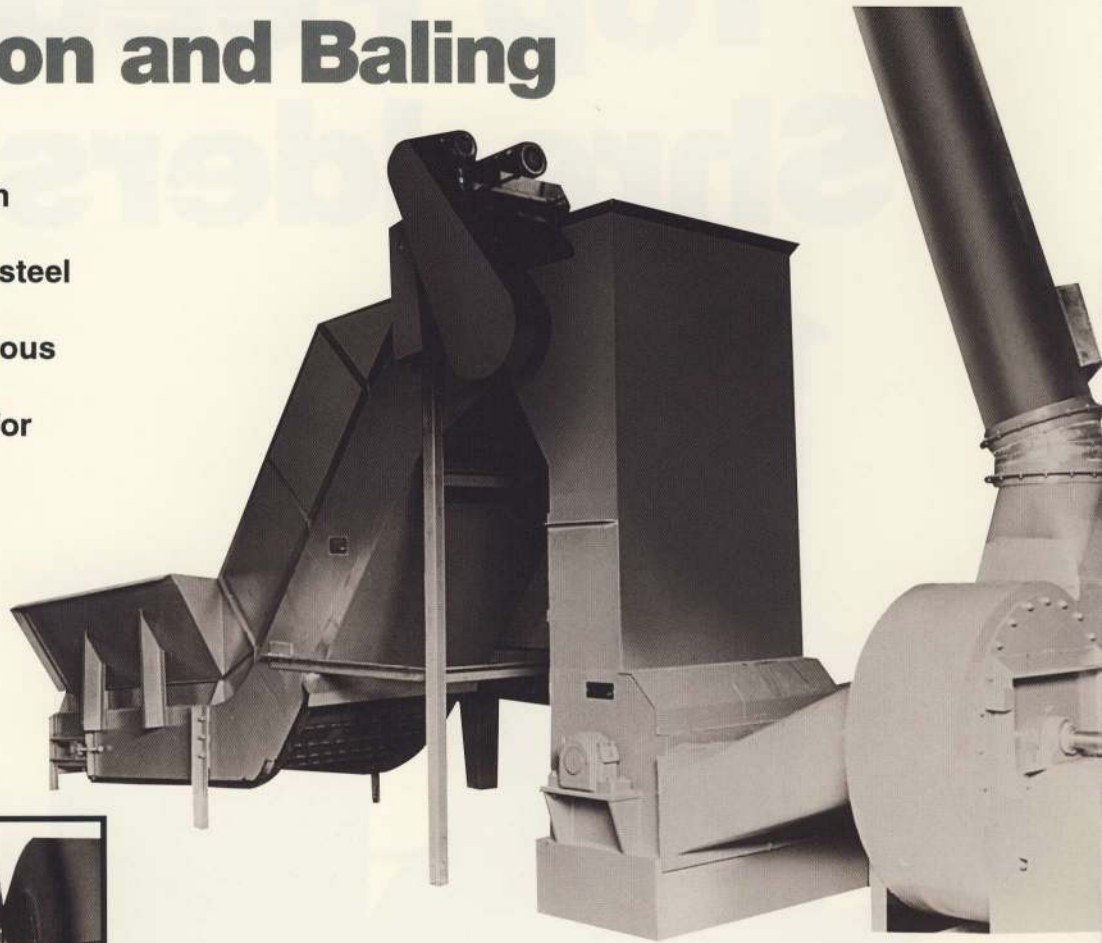
Designed and engineered for the destruction of:

- *Magazines • Signatures • Paperbacks*
- *Tab Cards • Computer Printouts • Coupons*
- *Bank Notes and a wide variety of other materials.*



Automatic High Volume Shredding, Destruction and Baling

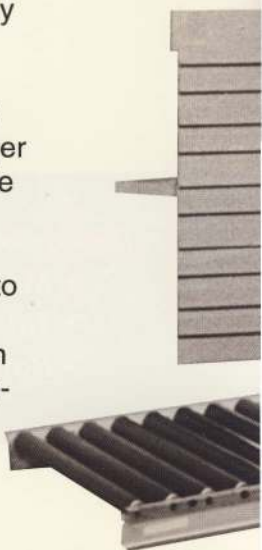
- Low noise levels.
- Heavy duty, super tough construction.
- Staggered, replaceable steel blades.
- Versatile design for various feed options.
- Automatic water spray for dust control.
- Adaptable to various balers or air handling systems.
- Interlocked electric controls.

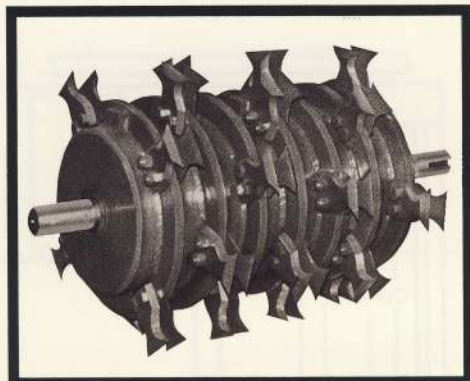


Every top feed shredder is provided with an arbor speed sensor, interfaced with the programmable controller. Each revolution of the arbor is counted automatically. If it slows down for any reason, the infeed conveyor will stop automatically. Under normal conditions, the possibility of stalling out the arbor is eliminated.

Maren top feed shredders can't be beat for safe high volume shredding for baling, and material destruction! Maren design and engineering offers flexibility in equipment layout as well as tough, heavy duty construction. This combination translates to efficient use of space and long dependable operation. Shredding before baling promotes dense, compact bales for savings and economy in both space and handling of waste material. Insurance against reentry into the market of sensitive materials is provided.

Maren's standard top feed shredders are capable of shredding up to 3,000 lbs. of material per hour. Larger models can do more! These shredders are adaptable to pneumatic conveying systems, and to all Maren open end automatic and closed end balers. As material is fed into the top feed shredder, it drops into the rotating blades. The whirling blades shred the material into small irregular shaped pieces, and then discharges them automatically into a pneumatic conveying system or directly into an automatic baler.





The single arbor design of each top feed shredder features staggered heat treated blades that are bolted to the arbor for easy replacement. Single and double blade configurations are available. Blades are reversible, thereby doubling the life of each blade.

Top feed piggyback configuration has the inherent advantage of offering high volume shredding and baling without the need for substantial floor space. Both inline and 90 degree configurations are available. When providing a piggyback system, we will:

1. Mount the shredder on a support stand, adjacent to the baler.
2. Provide a transition chute between the shredder discharge opening and the baler feeder hopper.
3. Interlock the electrical controls.
4. Provide an automatic water spray system.
5. Provide a dust collector.

The Maren top feed piggyback is available with any size shredder, and with any of our automatic horizontal balers.

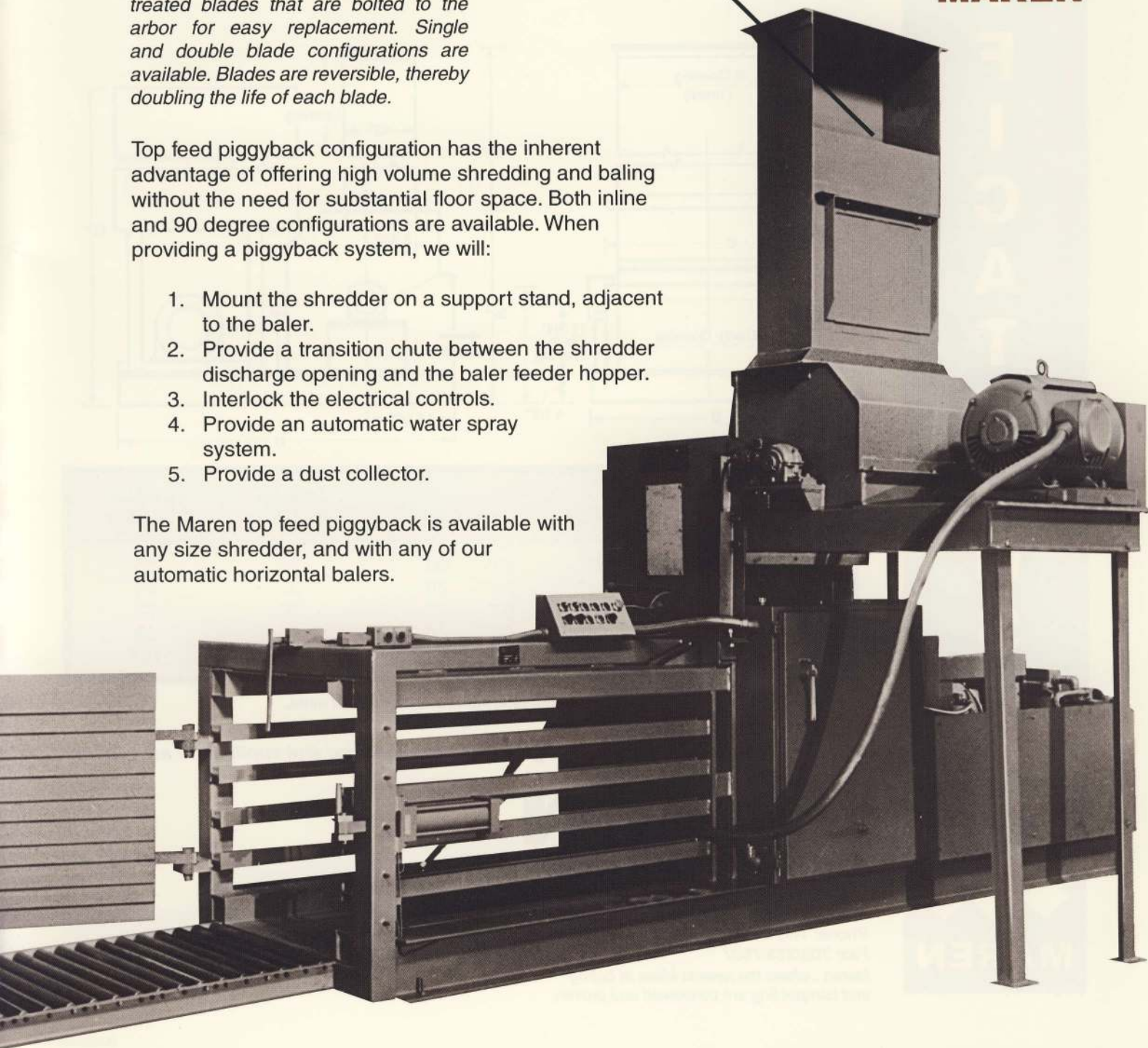
Optional Feed Systems

- **Top Feed**

Shredders can be furnished with open top and closed sides for gravity feed from above.

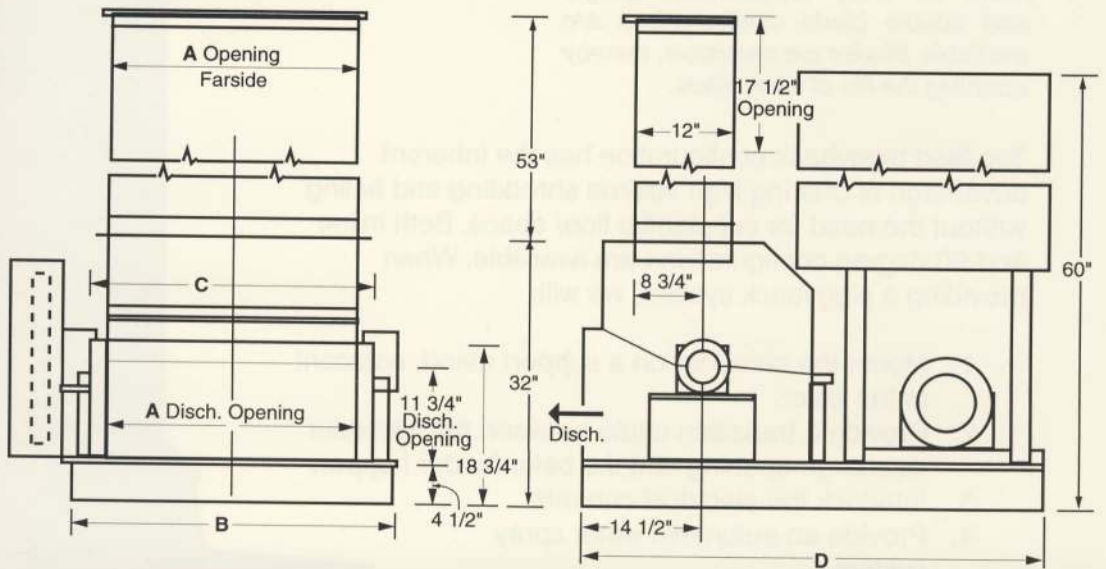
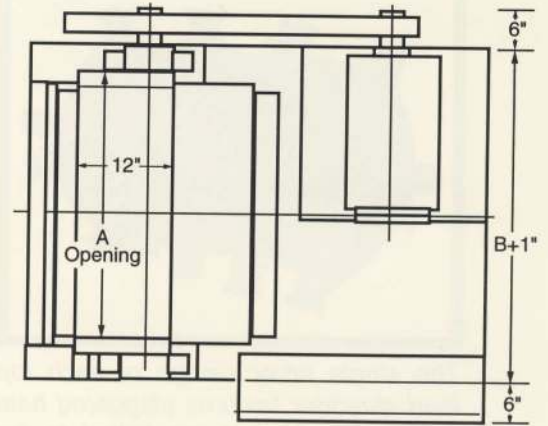
- **Conveyor Feed**

A conveyor may be used to deliver materials into the shredder.



SPECIFICATIONS

MAREN TOP-FEED SHREDDER



MODEL	A	B	C	D	H.P.*	SINGLE BLADES	DOUBLE BLADES
30"	30"	40"	35"	56"	30	28	56
36"	36"	46"	41"	56"	30	32	64
40"	40"	50"	45"	56"	30	36	72
50"	50"	60"	55"	56"	40	44	88
60	60"	74"	65"	62"	40	52	104

* Increased horsepower is available on all units.

Your local Maren representative is trained and qualified to give you expert service and application assistance.



MAREN ENGINEERING CORP.

P.O. Box 278
South Holland, IL 60473-0278
Phone: 708/333-6250
Fax: 708/333-7507

*Maren...where the newest ideas in baling
and compacting are conceived and proven.*

